

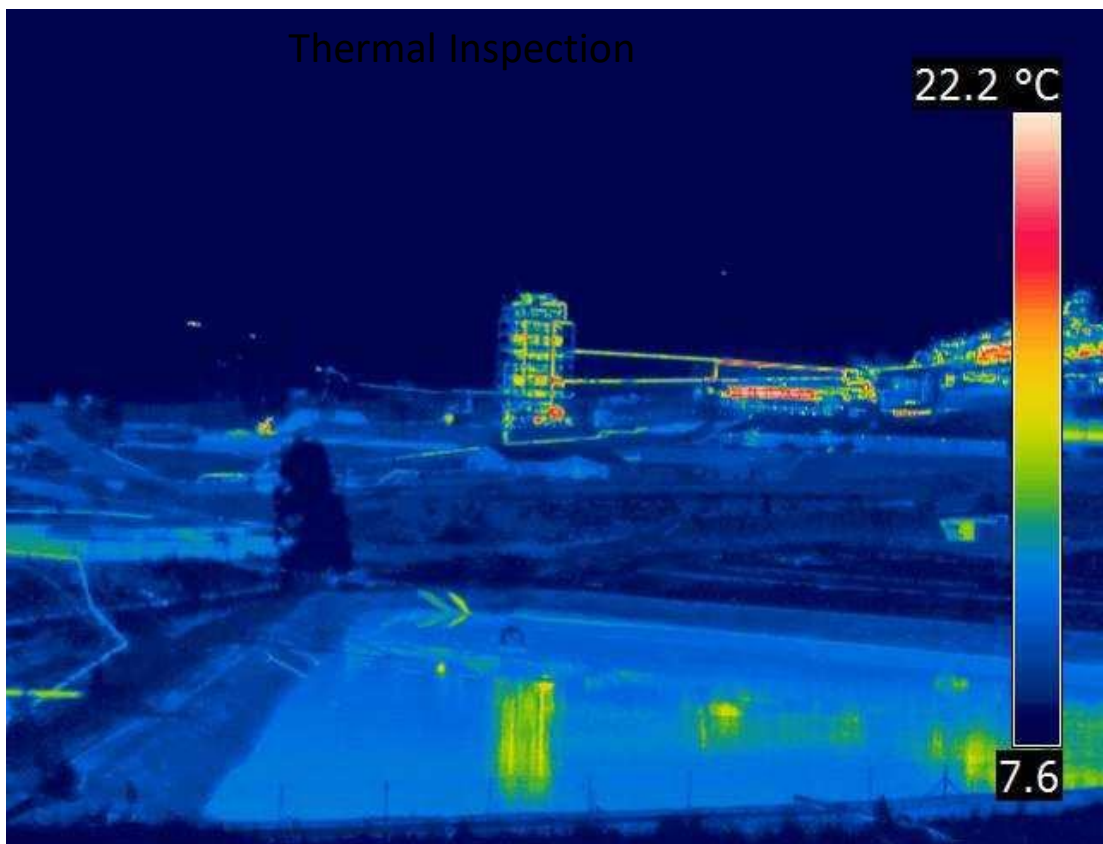
**INKAMPANI YAMAPAYIPI**  
The Pipe Company

Registration number: 2002/003792/0  
**Vat no 4840205605**

39 Rosemary Avenue, Annlin, 0182  
South Africa  
Tel no: +27 (0)82 417 6217

[wetpipe@gmail.com](mailto:wetpipe@gmail.com)  
[johan@wetpipe.co.za](mailto:johan@wetpipe.co.za)

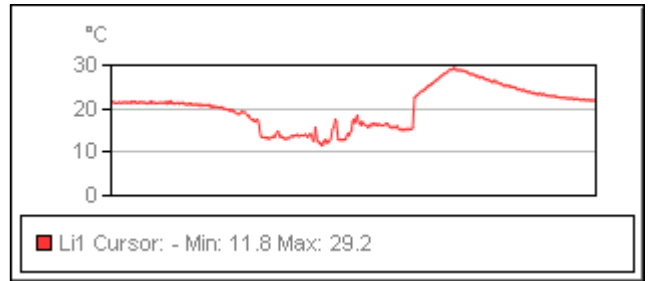
---



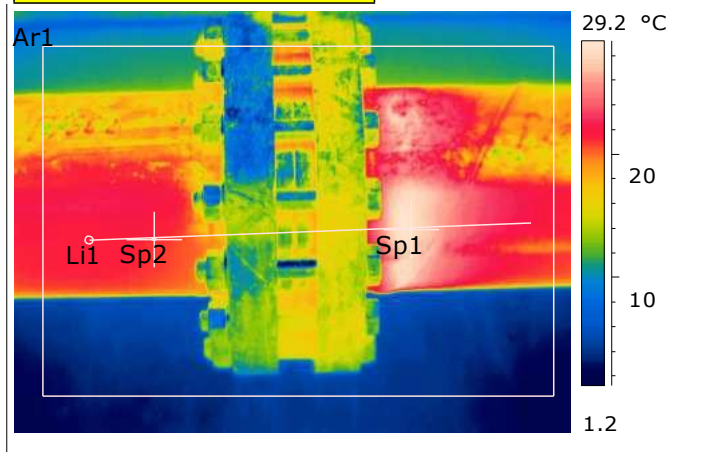
**Photo**



Location	Mine N
Equipment	Pipe Line
Equip Number	1661
Compartment	From flange



**Thermogram 11 August 2014**



Sp1 Temperature	28.6 °C
Sp2 Temperature	21.1 °C
Ar1 Max. Temperature	29.4 °C
Li1 Max. Temperature	29.2 °C
Object Distance	1.0 m
Emissivity	0.87
Longitude	E 30° 38.288'
Latitude	S 25° 47.456'

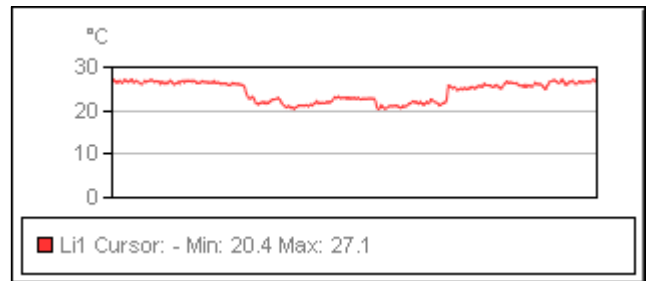
**Analysis and recommended actions:**

*Image suggests a tear in the lining (At night high emissivity). It is recommended to open and inspect.*

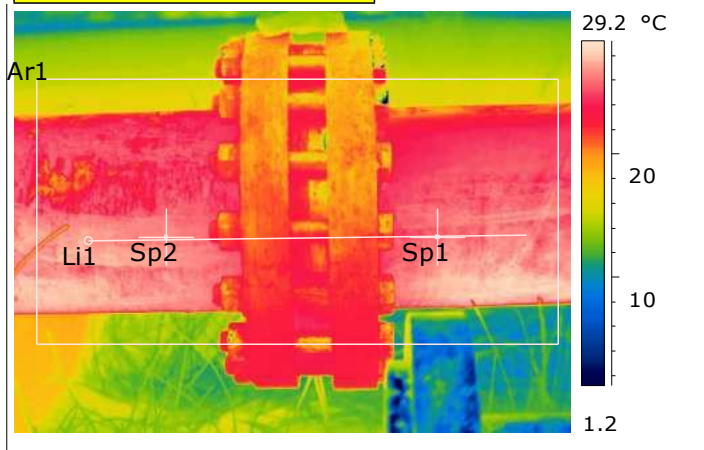
**Photo**



Location	Mine N
Equipment	Pipe Line
Equip Number	1790
Compartment	From Flange



**Thermogram 11 August 2014**

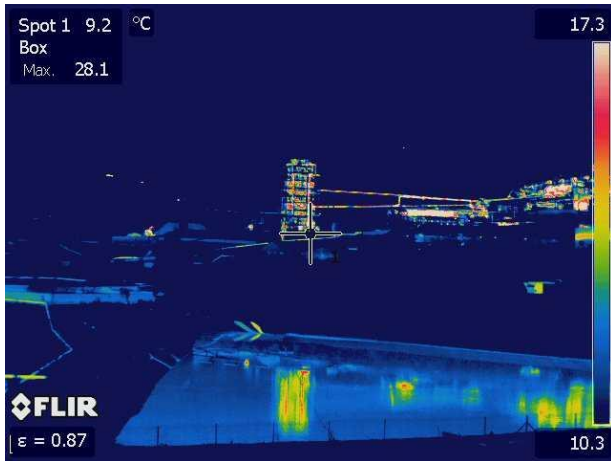


Sp1 Temperature	26.0 °C
Sp2 Temperature	26.6 °C
Ar1 Max. Temperature	28.8 °C
Li1 Max. Temperature	27.1 °C
Object Distance	1.0 m
Emissivity	0.87
Longitude	E 30° 38.615'
Latitude	S 25° 47.684'

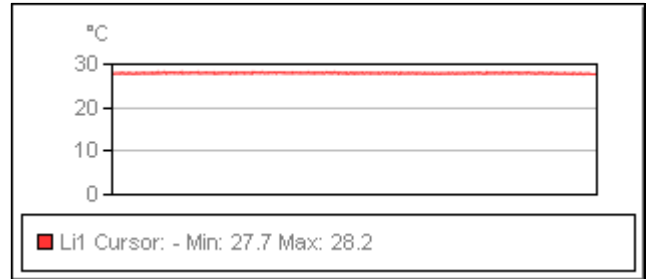
**Analysis and recommended actions:**

*No anomaly. No action required*

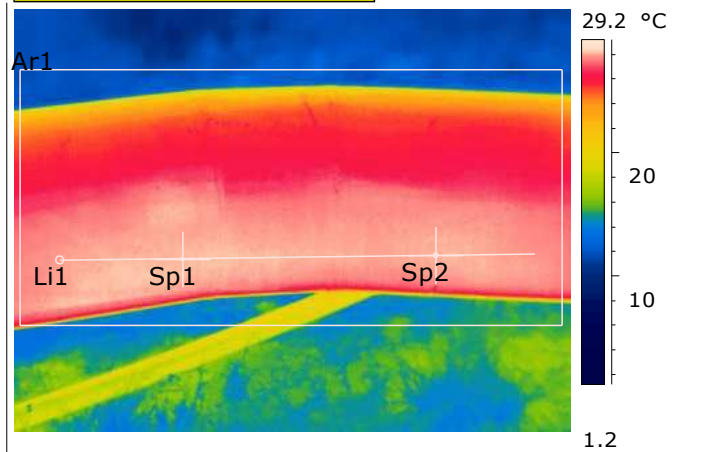
**No Ref Photo**



<i>Location</i>	<i>Mine N</i>
<i>Equipment</i>	<i>Pipe line</i>
<i>Equip Number</i>	<i>Dam Pipe Bend</i>
<i>Compartment</i>	<i>Bend</i>



**Thermogram 11 August 2014**

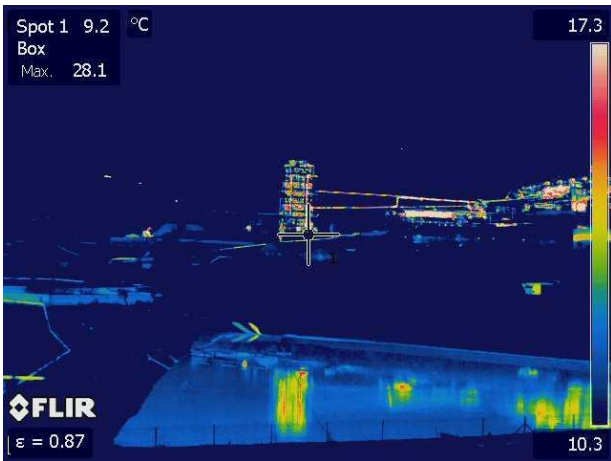


Sp1 Temperature	28.0 °C
Sp2 Temperature	27.9 °C
Ar1 Max. Temperature	28.2 °C
Li1 Max. Temperature	28.2 °C
Object Distance	1.0 m
Emissivity	0.87
Longitude	E 30° 39.27'
Latitude	S 25° 49.613'

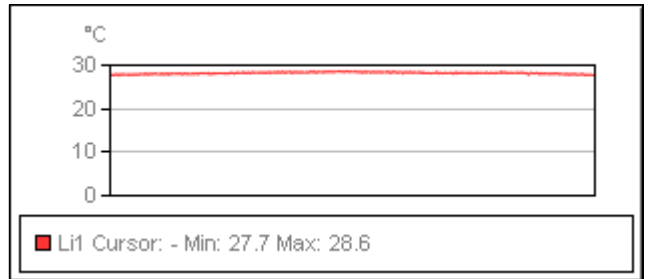
**Analysis and recommended actions:**

*Image suggest no damage on lining – no action required*

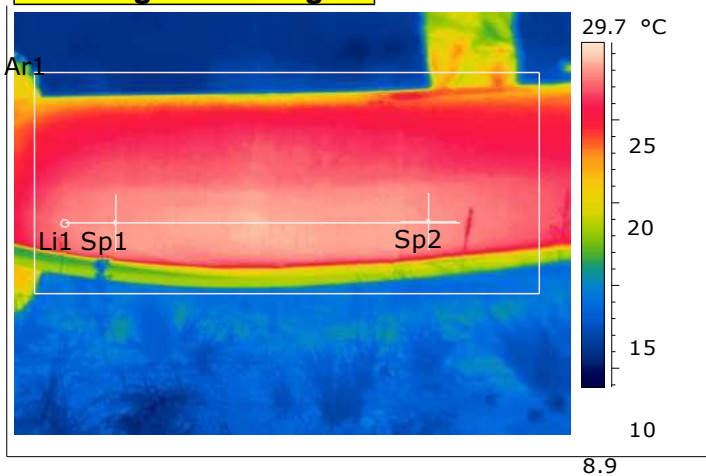
**No Ref Photo**



<i>Location</i>	<i>Mine N</i>
<i>Equipment</i>	<i>Pipe Line</i>
<i>Equip Number</i>	<i>Dam Pipe Line</i>
<i>Compartment</i>	<i>Bend</i>



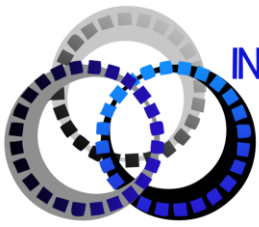
**Thermogram 11 August 2014**



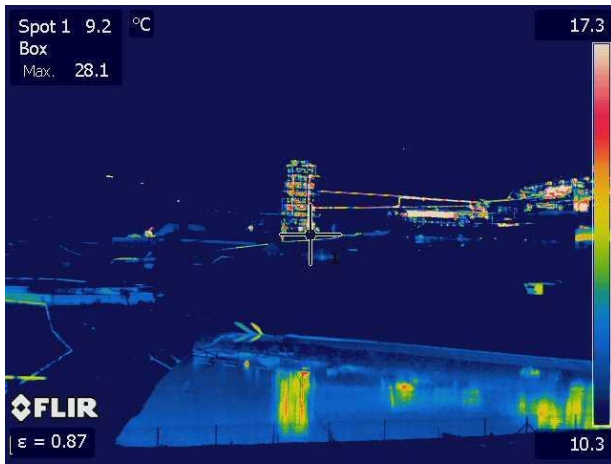
Sp1 Temperature	28.0 °C
Sp2 Temperature	28.1 °C
Ar1 Max. Temperature	28.6 °C
Li1 Max. Temperature	28.6 °C
Object Distance	1.0 m
Emissivity	0.87
Longitude	E 30° 39.30'
Latitude	S 25° 49.612'

**Analysis and recommended actions:**

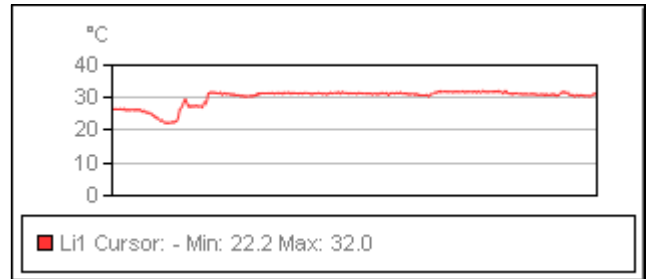
*Image suggest no damage on lining – no action required*



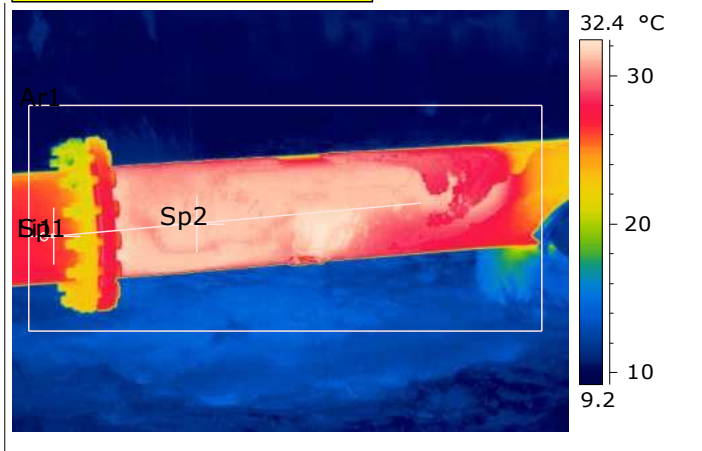
**No Ref Photo**



Location	Mine N
Equipment	Pipe Line
Equip Number	Dam Pipe
Compartment	From flange



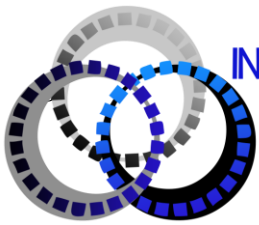
**Thermogram 11 August 2014**



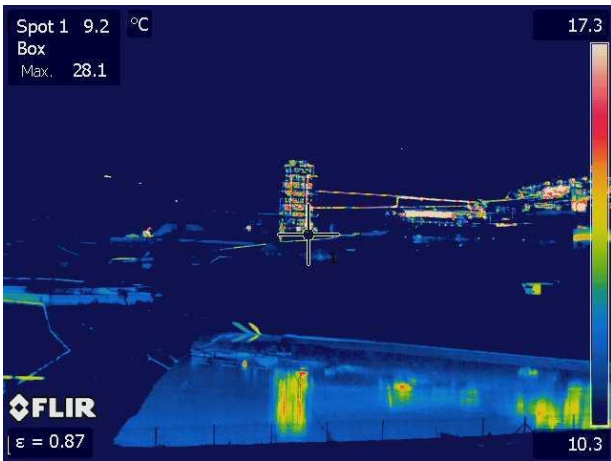
Sp1 Temperature	26.5 °C
Sp2 Temperature	31.5 °C
Ar1 Max. Temperature	32.5 °C
Li1 Max. Temperature	32.0 °C
Object Distance	1.0 m
Emissivity	0.87
Longitude	E 30° 39.47'
Latitude	S 25° 49.690'

**Analysis and recommended actions:**

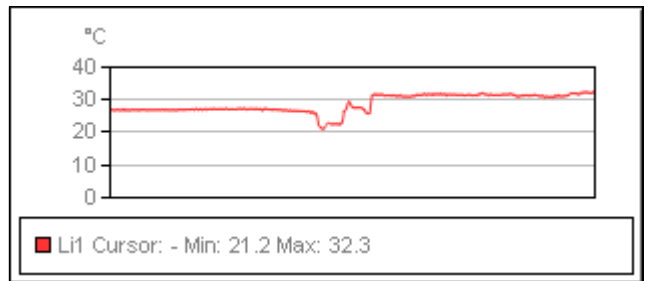
*Image suggest damage on lining – action to be taken*



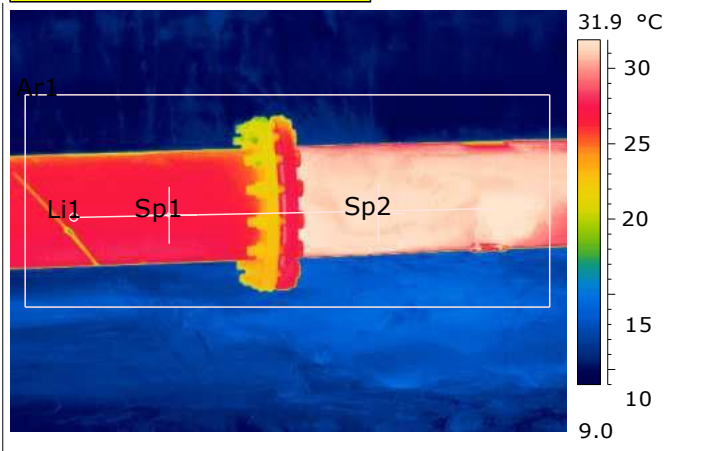
**No Ref Photo**



<i>Location</i>	<i>Mine N</i>
<i>Equipment</i>	<i>Pipe Line</i>
<i>Equip Number</i>	<i>Dam Pipe</i>
<i>Compartment</i>	<i>From Flange</i>



**Thermogram 11 August 2014**

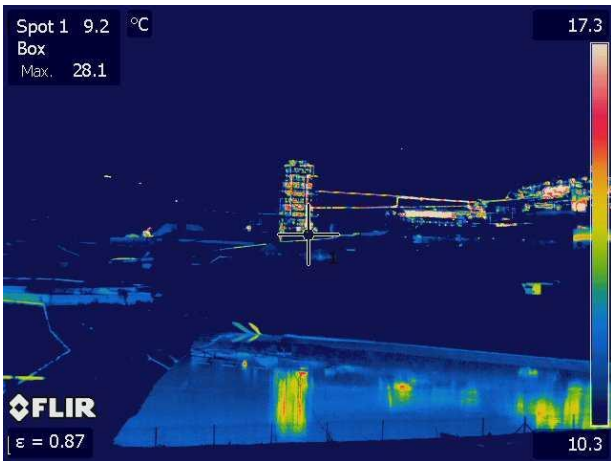


Sp1 Temperature	27.1 °C
Sp2 Temperature	31.5 °C
Ar1 Max. Temperature	32.6 °C
Li1 Max. Temperature	32.3 °C
Object Distance	1.0 m
Emissivity	0.87
Longitude	E 30° 39.47'
Latitude	S 25° 49.690'

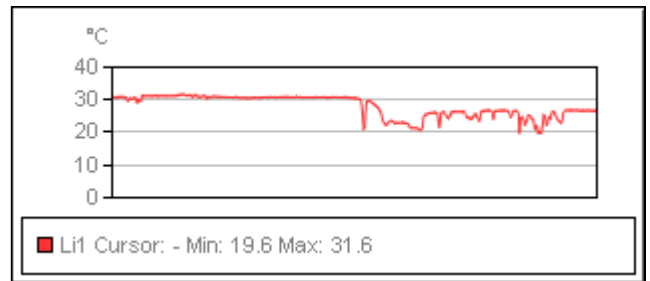
**Analysis and recommended actions:**

*Image suggest damage on lining – action to be taken*

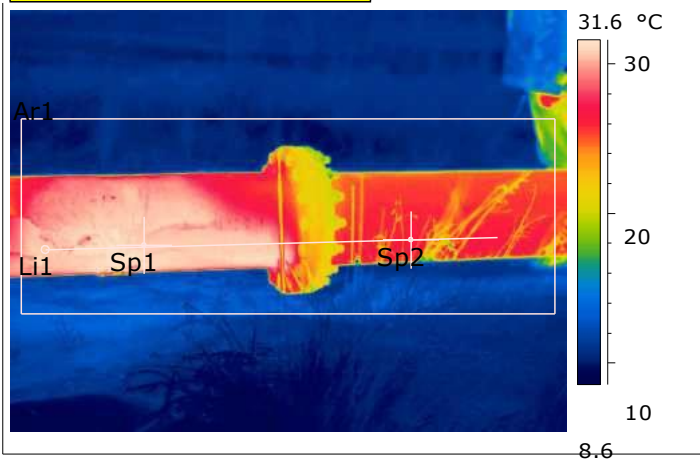
**No Ref Photo**



<i>Location</i>	<i>Mine N</i>
<i>Equipment</i>	<i>Pipe Line</i>
<i>Equip Number</i>	<i>Dam Pipe</i>
<i>Compartment</i>	<i>From Flange</i>



**Thermogram 11 August 2014**



Sp1 Temperature	30.9 °C
Sp2 Temperature	26.7 °C
Ar1 Max. Temperature	31.8 °C
Li1 Max. Temperature	31.6 °C
Object Distance	1.0 m
Emissivity	0.87
Latitude	S 25° 49.689'
Longitude	E 30° 39.41'

**Analysis and recommended actions:**

*Image suggest damage on lining – action to be taken*